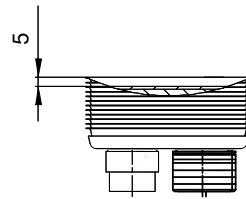
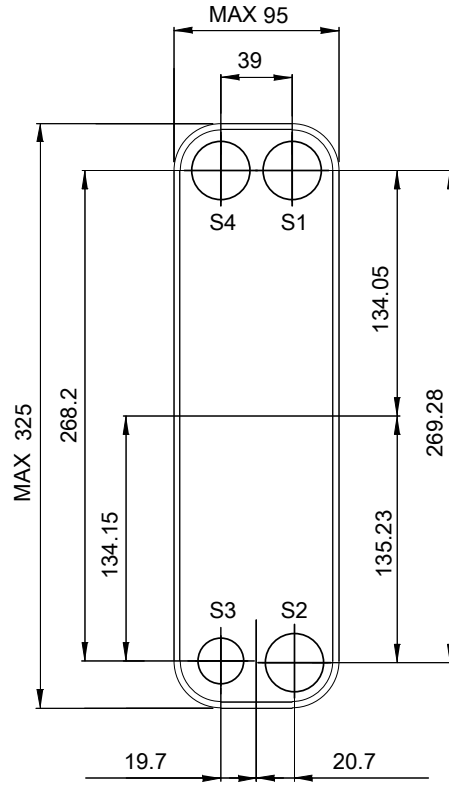
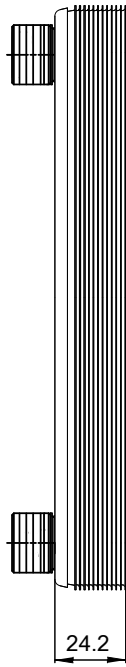
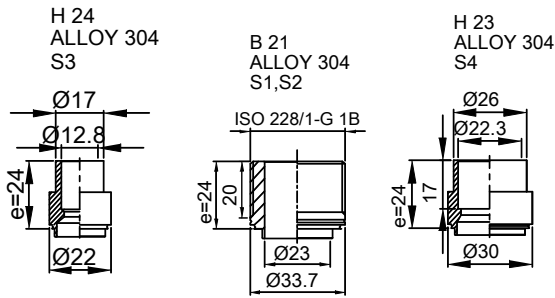


Note that all unique customer requirements (i.e tolerance) need to be verified thru Alfa Laval.



HEATING SURFACE m²
 NETWEIGHT 2.0 kg
 OPERATING WEIGHT kg
 PLATE MATERIAL ALLOY 316
 PLATE GROUPING 1*4H/1*5H

Frameplate is depressed 1.2 mm at connection S4
 Pressureplate is depressed 1.2 mm / even number of channel
 plates at connections T4 / uneven number of channel plates at
 connections T1.
 T1 T2 T3 T4 locations on back side
 correspond to S1 S2 S3 S4 on front side

ALL DIMENSIONS IN MILLIMETERS

SIDE	MEDIA	INLET	TEMP.	OUTLET	TEMP.	FLOW RATE	PRESSURE DROP	LIQUID VOL.
1	Water	S1	°C	S2	°C	kg/h	kPa	0.1 dm ³
2	R134a	S3	°C	S4	°C	kg/h	kPa	0.1 dm ³

PRESSURE VESSEL APPROVAL PED

AC-30EQ-10H-F (3288153696)

www.alfalaval.com

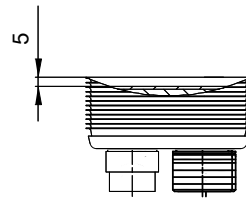
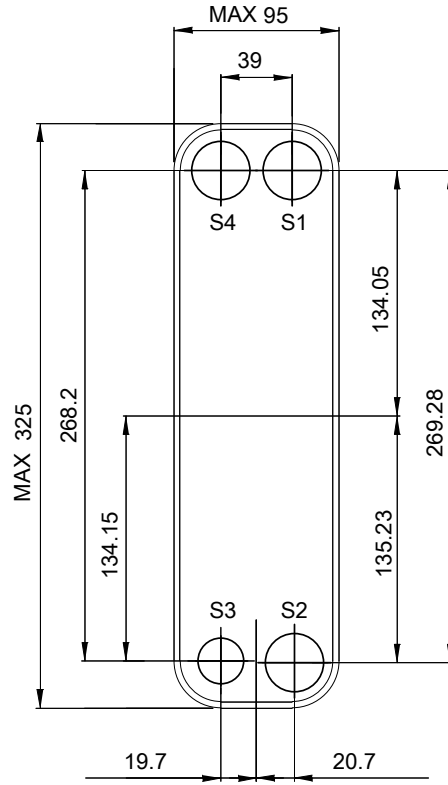
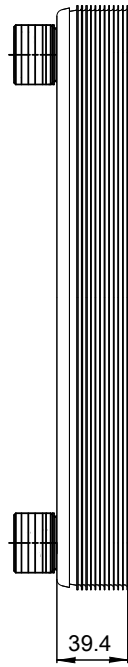
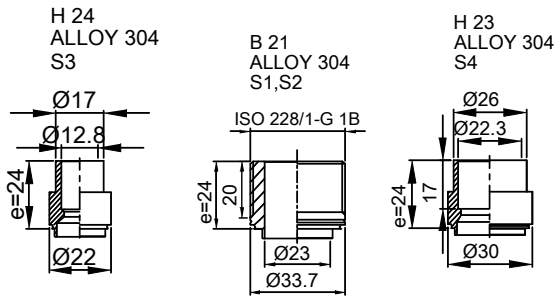
CUSTOMER NAME / REF. NO.

TOTAL LENGTH 48 mm
 TOTAL WIDTH 95 mm
 TOTAL HEIGHT 325 mm

Společnost / Ref.
 E S L, a.s.
 nezávislé výpočty

12.11.2018
 REV 0

Note that all unique customer requirements (i.e tolerance) need to be verified thru Alfa Laval.



HEATING SURFACE m²
 NETWEIGHT 2.9 kg
 OPERATING WEIGHT kg
 PLATE MATERIAL ALLOY 316
 PLATE GROUPING 1*9H/1*10H

Frameplate is depressed 1.2 mm at connection S4
 Pressureplate is depressed 1.2 mm / even number of channel
 plates at connections T4 / uneven number of channel plates at
 connections T1.
 T1 T2 T3 T4 locations on back side
 correspond to S1 S2 S3 S4 on front side

ALL DIMENSIONS IN MILLIMETERS

SIDE	MEDIA	INLET	TEMP.	OUTLET	TEMP.	FLOW RATE	PRESSURE DROP	LIQUID VOL.
1	Water	S1	°C	S2	°C	kg/h	kPa	0.3 dm ³
2	R134a	S3	°C	S4	°C	kg/h	kPa	0.3 dm ³

PRESSURE VESSEL APPROVAL PED

AC-30EQ-20H-F (3288153698)

www.alfalaval.com

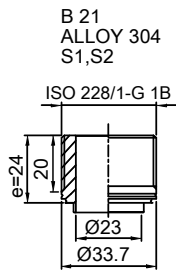
CUSTOMER NAME / REF. NO.

Společnost / Ref.
 E S L, a.s.
 nezávislé výpočty

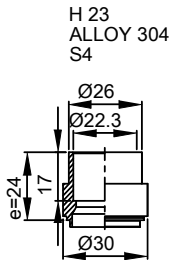
TOTAL LENGTH 63 mm
 TOTAL WIDTH 95 mm
 TOTAL HEIGHT 325 mm

12.11.2018
 REV 0

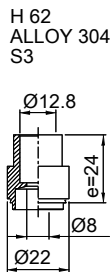
Note that all unique customer requirements (i.e tolerance) need to be verified thru Alfa Laval.



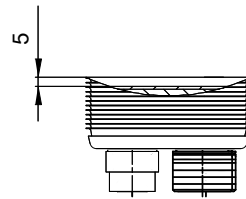
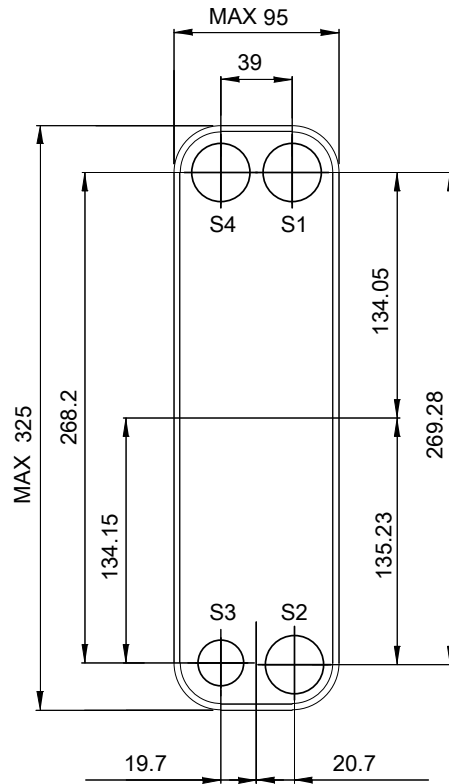
B 21
ALLOY 304
S1,S2



H 23
ALLOY 304
S4



H 62
ALLOY 304
S3



HEATING SURFACE m²
 NETWEIGHT 3.8 kg
 OPERATING WEIGHT kg
 PLATE MATERIAL ALLOY 316
 PLATE GROUPING 1*14H/1*15H

Frameplate is depressed 1.2 mm at connection S4
 Pressureplate is depressed 1.2 mm / even number of channel
 plates at connections T4 / uneven number of channel plates at
 connections T1.
 T1 T2 T3 T4 locations on back side
 correspond to S1 S2 S3 S4 on front side

ALL DIMENSIONS IN MILLIMETERS

SIDE	MEDIA	INLET	TEMP. °C	OUTLET	TEMP. °C	FLOW RATE	PRESSURE DROP	LIQUID VOL.
1	Water	S1	°C	S2	°C	kg/h	kPa	0.4 dm ³
2	R134a	S3	°C	S4	°C	kg/h	kPa	0.4 dm ³



PRESSURE VESSEL APPROVAL PED
 AC-30EQ-30H-F (3288101016)

www.alfalaval.com

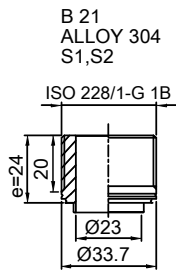
CUSTOMER NAME / REF. NO.

TOTAL LENGTH 79 mm
 TOTAL WIDTH 95 mm
 TOTAL HEIGHT 325 mm

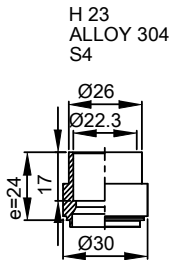
Společnost / Ref.
 E S L, a.s.
 nezávislé výpočty

12.11.2018
 REV 0

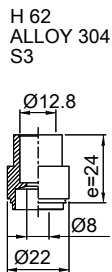
Note that all unique customer requirements (i.e tolerance) need to be verified thru Alfa Laval.



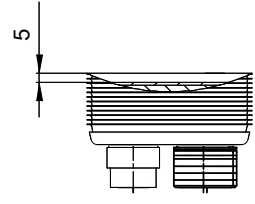
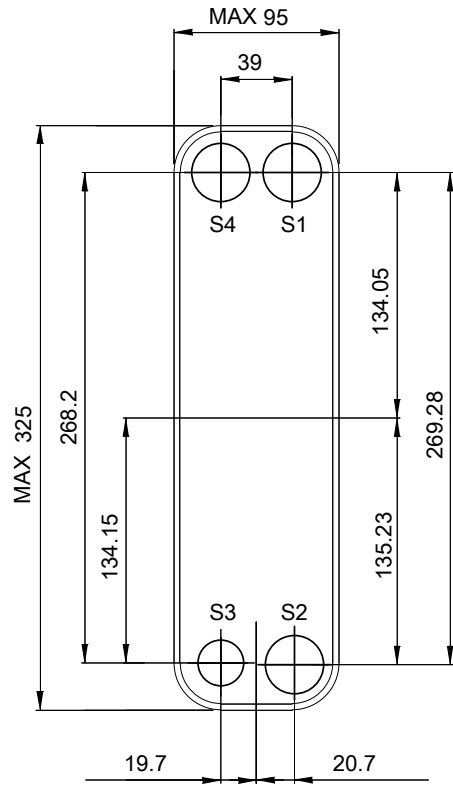
B 21
ALLOY 304
S1,S2



H 23
ALLOY 304
S4



H 62
ALLOY 304
S3



HEATING SURFACE m²
NETWEIGHT 4.6 kg
OPERATING WEIGHT kg
PLATE MATERIAL ALLOY 316
PLATE GROUPING 1*19H/1*20H

Frameplate is depressed 1.2 mm at connection S4
Pressureplate is depressed 1.2 mm / even number of channel plates at connections T4 / uneven number of channel plates at connections T1.
T1 T2 T3 T4 locations on back side correspond to S1 S2 S3 S4 on front side

ALL DIMENSIONS IN MILLIMETERS

SIDE	MEDIA	INLET	TEMP. °C	OUTLET	TEMP. °C	FLOW RATE	PRESSURE DROP	LIQUID VOL.
1	Water	S1	°C	S2	°C	kg/h	kPa	0.6 dm ³
2	R134a	S3	°C	S4	°C	kg/h	kPa	0.5 dm ³

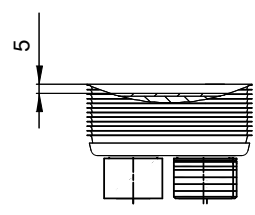
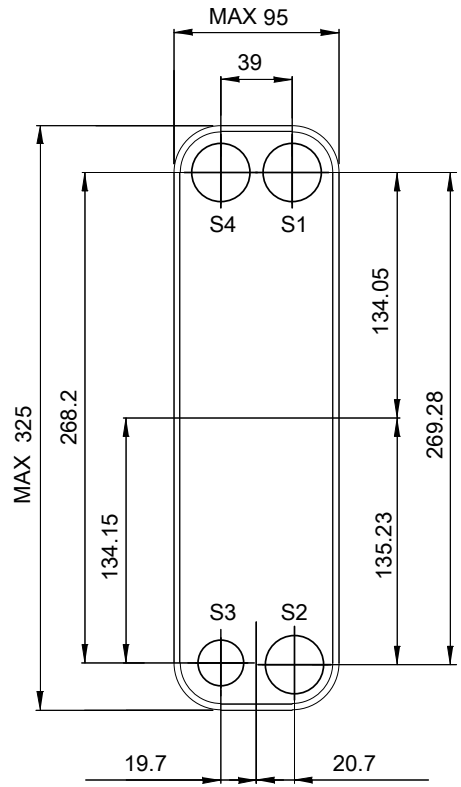
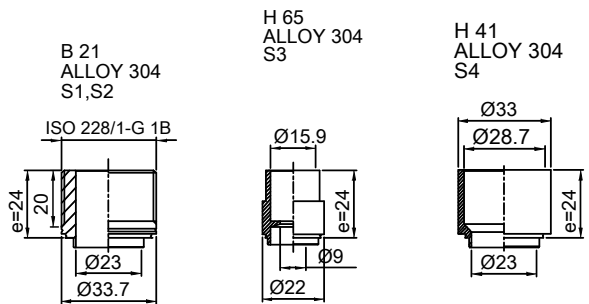


PRESSURE VESSEL APPROVAL PED
AC-30EQ-40H-F (3288101018)

www.alfalaval.com

CUSTOMER NAME / REF. NO. Společnost / Ref. E S L, a.s. nezávislé výpočty	TOTAL LENGTH 94 mm TOTAL WIDTH 95 mm TOTAL HEIGHT 325 mm	12.11.2018 REV 0

Note that all unique customer requirements (i.e tolerance) need to be verified thru Alfa Laval.



HEATING SURFACE m²
 NETWEIGHT 5.8 kg
 OPERATING WEIGHT kg
 PLATE MATERIAL ALLOY 316
 PLATE GROUPING 1*26H/1*27H

Frameplate is depressed 1.2 mm at connection S4
 Pressureplate is depressed 1.2 mm / even number of channel
 plates at connections T4 / uneven number of channel plates at
 connections T1.
 T1 T2 T3 T4 locations on back side
 correspond to S1 S2 S3 S4 on front side

ALL DIMENSIONS IN MILLIMETERS

SIDE	MEDIA	INLET	TEMP.	OUTLET	TEMP.	FLOW RATE	PRESSURE DROP	LIQUID VOL.
1	Water	S1	°C	S2	°C	kg/h	kPa	0.8 dm ³
2	R134a	S3	°C	S4	°C	kg/h	kPa	0.7 dm ³

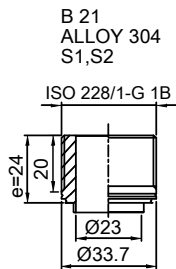


PRESSURE VESSEL APPROVAL PED
 AC-30EQ-54H-F (3288101403)

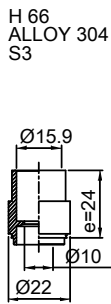
www.alfalaval.com

CUSTOMER NAME / REF. NO. Společnost / Ref. E S L, a.s. nezávislé výpočty	TOTAL LENGTH 115 mm TOTAL WIDTH 95 mm TOTAL HEIGHT 325 mm	12.11.2018 REV 0

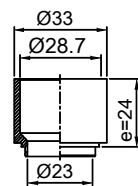
Note that all unique customer requirements (i.e tolerance) need to be verified thru Alfa Laval.



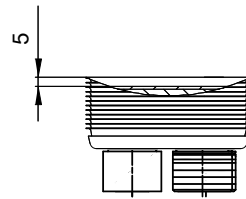
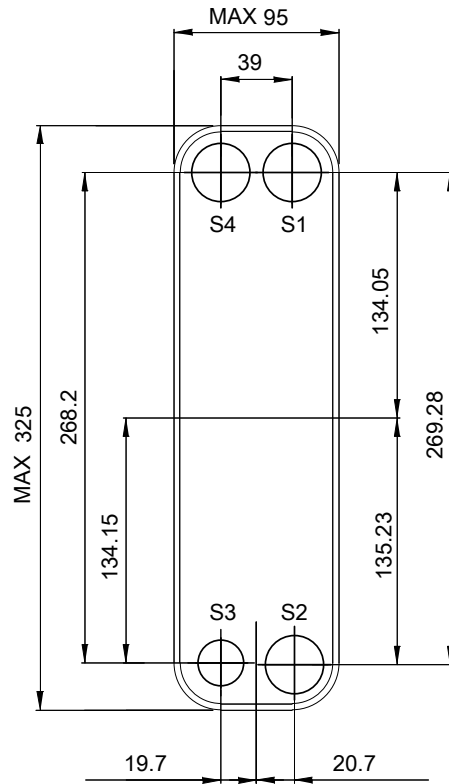
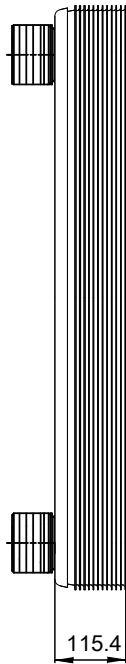
B 21
ALLOY 304
S1,S2



H 66
ALLOY 304
S3



H 41
ALLOY 304
S4



Frameplate is depressed 1.2 mm at connection S4
Pressureplate is depressed 1.2 mm / even number of channel
plates at connections T4 / uneven number of channel plates at
connections T1.
T1 T2 T3 T4 locations on back side
correspond to S1 S2 S3 S4 on front side

HEATING SURFACE m²
NETWEIGHT 7.2 kg
OPERATING WEIGHT kg
PLATE MATERIAL ALLOY 316
PLATE GROUPING 1*34H/1*35H

ALL DIMENSIONS IN MILLIMETERS

SIDE	MEDIA	INLET	TEMP. °C	OUTLET	TEMP. °C	FLOW RATE	PRESSURE DROP	LIQUID VOL.
1	Water	S1	°C	S2	°C	kg/h	kPa	1.0 dm ³
2	R134a	S3	°C	S4	°C	kg/h	kPa	1.0 dm ³

PRESSURE VESSEL APPROVAL PED

AC-30EQ-70H-F (3288101405)

www.alfalaval.com

CUSTOMER NAME / REF. NO.

Společnost / Ref.
E S L, a.s.
nezávislé výpočty

TOTAL LENGTH 139 mm
TOTAL WIDTH 95 mm
TOTAL HEIGHT 325 mm

12.11.2018
REV 0