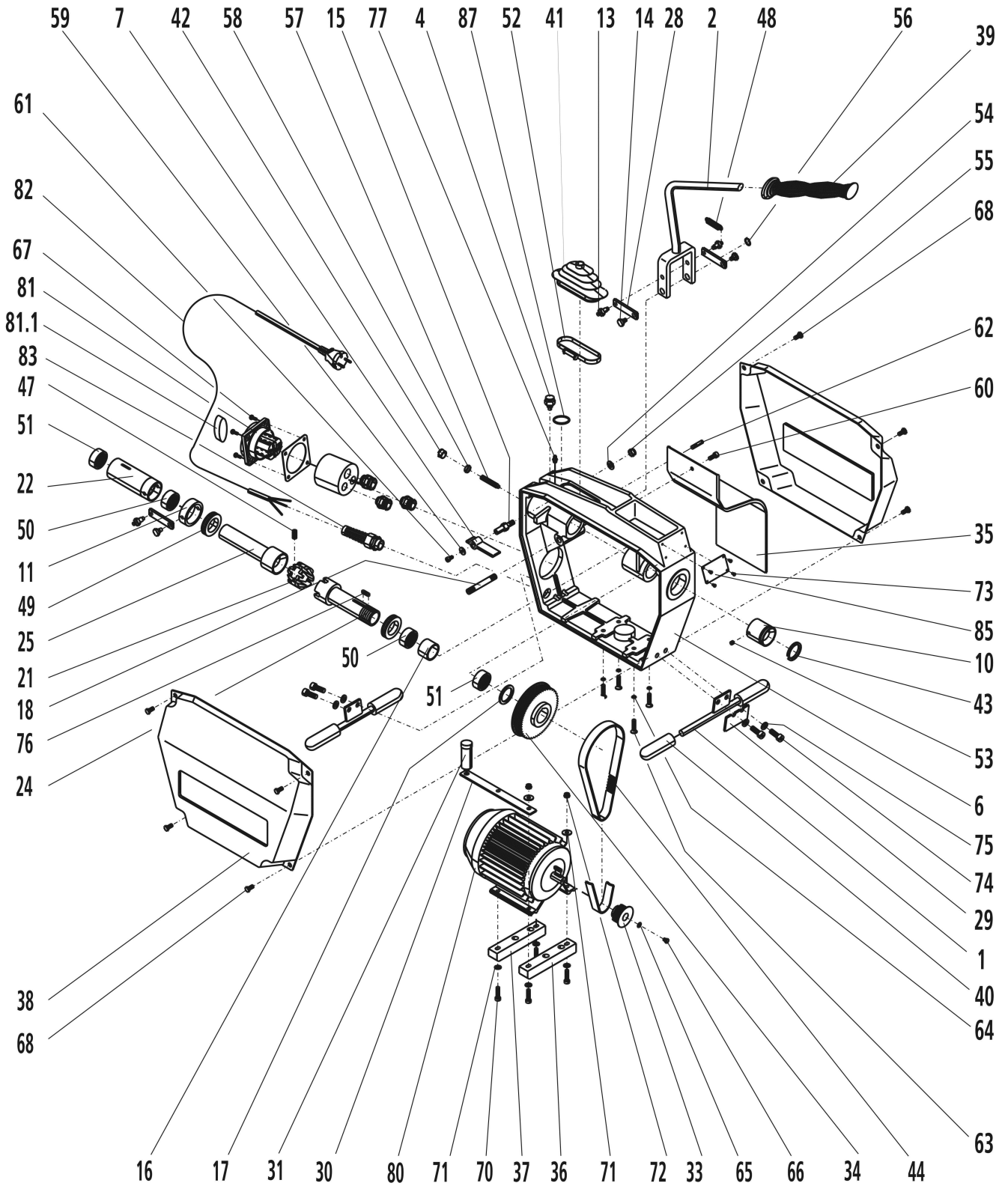


R600

No. 72687, 72665, 72869

dated: 02/17



R600

dated: 02/17

No. 72687, 72665, 72869

Item no.	Description	Article no.	Old article no.	Quantity	Price (€)
---	Label lubrication instruction	H99079	H99079	1	1,45
1	Base, in front	H90103	H90103	2	15,15
2	Hand lever	H98400	H98400	1	34,45
4	Catch	H90111	H90111	1	11,85
6	Housing	H98409	H98409	1	220,95
7	Hand lever locking	H98401	H98401	1	15,75
10	Cap, in front, metric	H99683	H99683	1	19,45
11	Thrust collar 52x42x20	H98281	H98281	1	10,75
13	Joint bolt 10x21,5	H98285	H98285	2	6,45
14	Joint bolt 10x18,5, in front	H98287	H98287	2	3,15
15	Bolt for hand lever locking	H98451	H98451	1	8,05
16	Spacing tube	H98472	H98472	1	5,25
17	Washer disc	H98473	H98473	1	6,35
18	Bolt for hand lever	H98452	H98452	1	5,75
21	Clamping jaw set	72638	72638	1	89,95
22	Bushing compl.	H98278	H98278	1	54,45
24	Conic shaft metric	H98474	H98474	1	41,95
25	Conic sleeve	H98475	H98475	1	36,95
28	Joint plate	H90130	H90130	2	14,45
29	Clutch holder	H98232	H98232	1	18,45
30	Condenser holder	H90134	H90134	1	4,95
31	Condenser 16 my 400V	H98917	H98917	1	37,45
33	Drive pulley	H98304	H98304	1	14,45
34	Drive pulley	H99681	H99681	1	13,95
35	Drain gutter	H98410	H98410	1	10,75
36	Insulation flat, in front	H98356	H98356	1	14,45
37	Insulation flat, rear	H98307	H98307	1	11,25
38	Hood, red	H90136	H90136	2	32,45
39	Handle PVC	H98397	H98397	1	15,75
40	Rubber pad 25x12x90 mm / 60-7	H98256	H98256	4	2,45
41	Bellow	H98395	H98395	1	11,85
42	Plug	H98358	H98358	1	1,45
43	O-ring	H98369	H98369	1	2,05
44	Toothed drive belt 187I075	H98295	H98295	1	20,45
47	Compression spring 8,5x26 / 60-24	H98273	H98273	3	0,95
48	Tension spring	H90150	H90150	1	3,15
49	Ball bearing 51106	H98276	H98276	2	6,45
50	Needle bearing HK3016	H98280	H98280	2	9,75
51	Needle bearing H.37x30x18x60-30	H98279	H98279	2	10,75
52	Hose clip	H97456	H97456	1	6,95
53	Set screw M6x6 DIN 914	H98266	H98266	2	1,45
54	Washer DIN125 A8,4	H98671	H98671	1	0,45
55	Hexagon nut M8 DIN 985	H88502	H88502	1	0,45
56	Retaining ring DIN471 12x1	H98973	H98973	2	0,95
57	Set screw DIN 417 M8x50	H88603	H88603	1	2,05
58	Hexagon nut M8 DIN 934	H98289	H98289	1	0,45
59	Washer DIN 9021 B5,3 galv.	F81677	H98670	1	0,45
60	Screw	H98291	H98291	1	0,95
61	Screw M5x12 DIN 912	H98669	H98669	1	0,45
62	Grooved dowel pin DIN1469 6x28	H88582	H88582	1	2,05
63	Screw DIN7991 M6x30 galv.	H98309	H98309	4	1,45
64	Lock washer V6 DIN 6797 galv.	H98310	H98310	4	0,45
65	Washer 5,3 DIN 137 Form A INOX	R9895800	H98958	1	0,95
66	Screw DIN 933 M5x16 galv.	H98606	H98606	1	0,95
67	Screw DIN 7985 M4x12	H98333	H98333	4	0,45
68	Fillister head screw with flange M6x16	L20021	L20021	8	1,45
70	Screw DIN912 6x30 galv.	H98352	H98352	4	0,95
71	Washer DIN125 A 6,4 galv.	H98353	H98353	6	0,45
72	Hexagon nut M6 DIN 985	H88501	H88501	4	0,45
73	Grooved drive stud	H98254	H98254	4	0,45
74	Screw DIN912 M8x25 galv.	H98262	H98262	4	1,45
75	Spring washer A 8 DIN 127 galv.	H98263	H98263	4	0,45
76	Paralell key DIN6885 A 5x5x25	H98200	H98200	1	0,95
77	Lubrication nipple H1 M6x1	H98963	H98963	2	2,45
80	Motor 100V	H98944	H98944	1	267,95
80	Motor 230V	H98296	H98296	1	184,95
80	Motor 110V	H98297	H98297	1	253,95
81	Switch complete	H98327	H98327	1	75,45
81.1	Knob for switch with screw	1500000472	1500000472	1	9,15
82	Power cord EUR with PRCD (230V)	F88086	F88086	1	59,45

R600

dated: 02/17

No. 72687, 72665, 72869

Item no.	Description	Article no.	Old article no.	Quantity	Price (€)
82	Line cord „EUROPE“	H98313	H98313	1	18,45
83	Screwed cable gland PG 13.5	H86356	H86356	1	6,95
85	Type plate ROTHENBERGER 230V	H92809	H92809	1	o.r.

IMPORTANT! To assure safety and reliability, repairs, maintenance and adjustment must be performed by ROTHENBERGER Kelkheim or authorized Service-Centers. Always use Original-Service-Parts. Order your accessories and spare parts from your specialist retailer or using our Service After Sales hotline